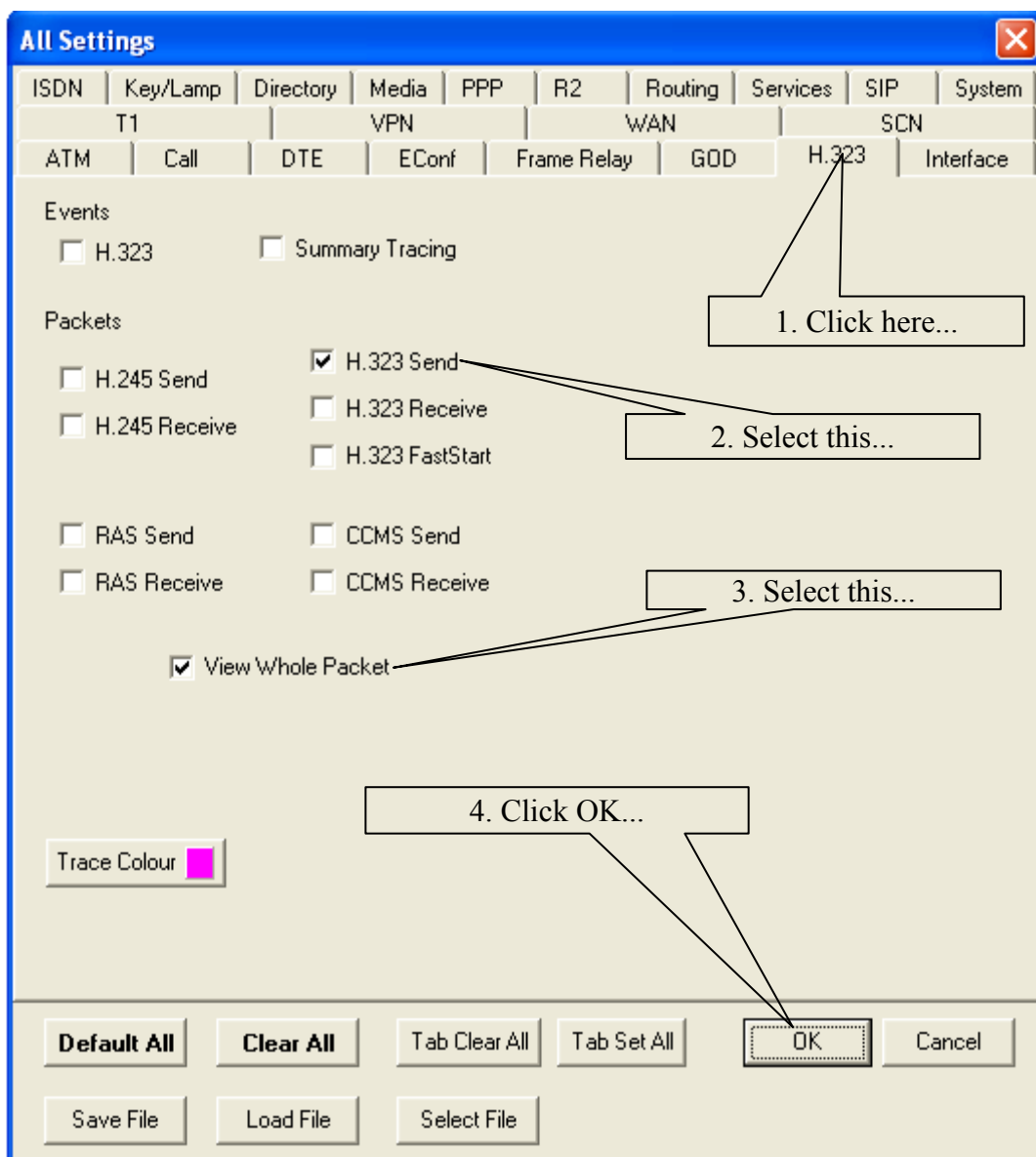
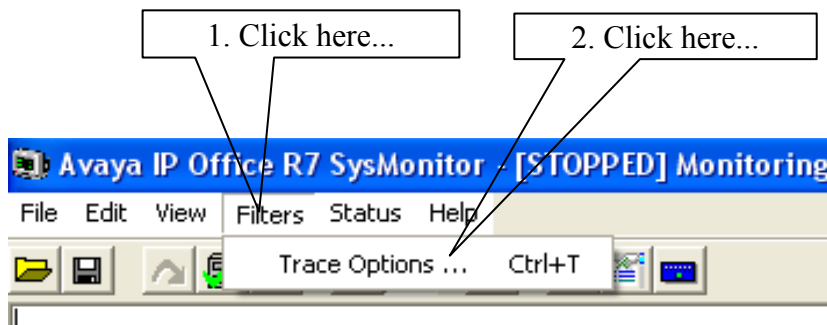


Avaya IP Office Essential Edition

Viewing Outgoing Data on an H323 Trunk

Telquest Tech Support

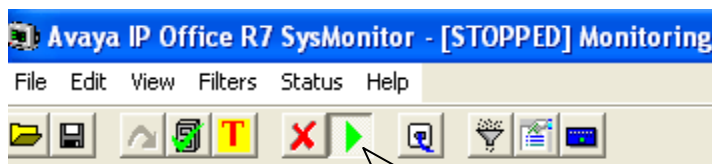
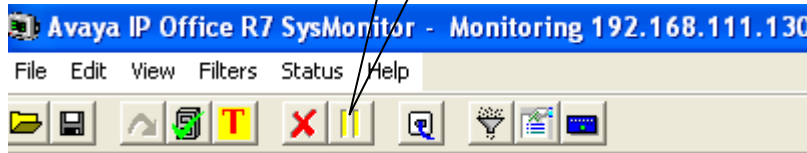
Start the Monitor program.



Place a call over the H323 Trunk

You will see a large amount of data presented to the screen.

As soon as you see it click on the **Pause Button**



It will turn Green...

Scroll to the beginning of the data.

You will see something similar to this:

```
2276724mS H323Tx: dst=192.168.111.123:1720
H323 Pcol=08(Q931) Reflen=2 ref=001C(Remote)
Message Type = Setup
InformationElement = BearerCapability
0000 04 03 80 90 a2 .....
InformationElement = Display
0000 28 0e 4f 70 65 72 61 74 6f 72 20 31 3e 33 33 33 (.Operator 1>333
InformationElement = CallingPartyNumber
0000 6c 04 80 32 30 31 I..201
InformationElement = CalledPartyNumber
0000 70 04 80 33 33 33 p..333
```

The IP Address and Port where the call was SENT TO...

The Name of the extension
that made the call

The Extension Number
that made the call

The Number that was sent over the H323 Trunk